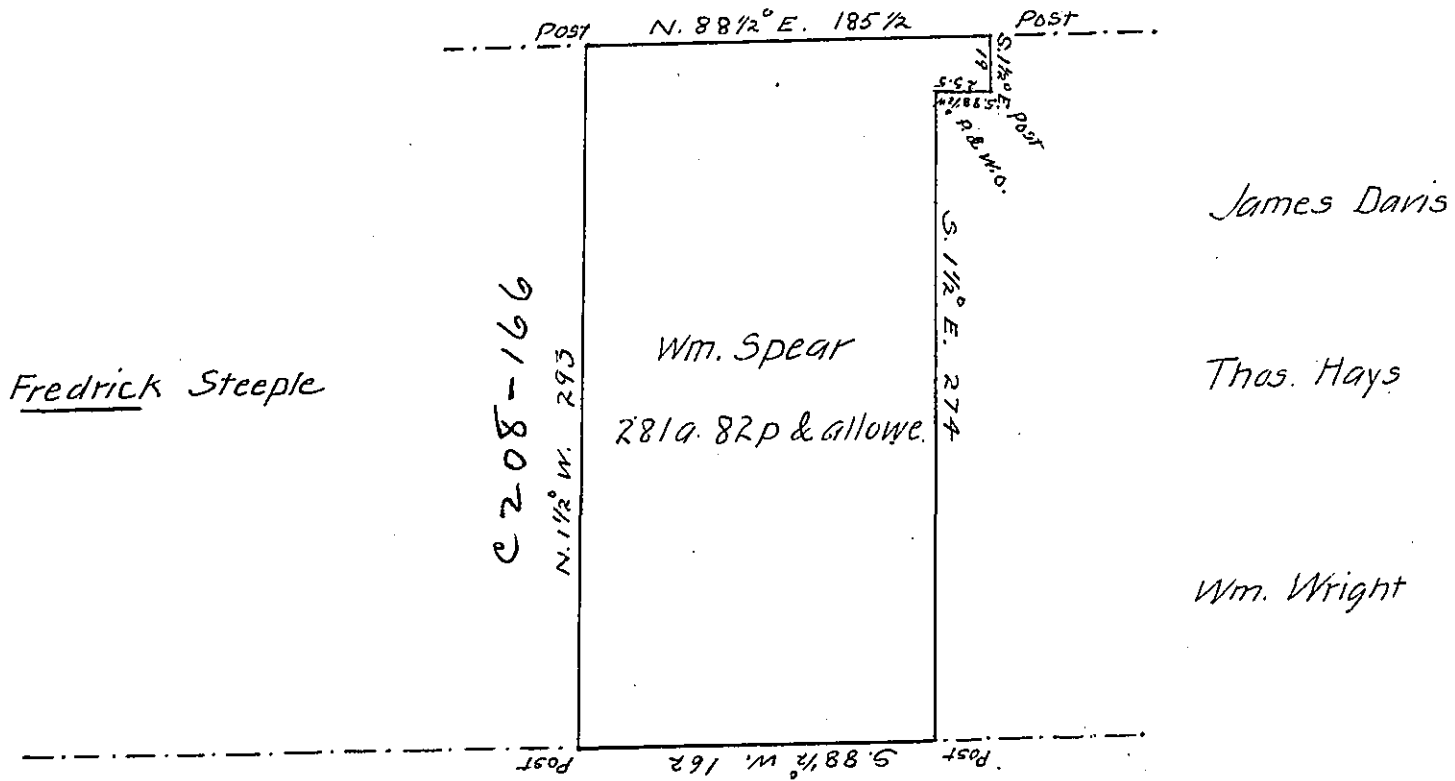


1
66
D

Wm. Cashdollar
C 33-91



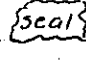
C 218-14815
John Spear

Draft of a tract of Land in Cranberry Tp. Butler Co. surveyed Nov. 28th. A.D. 1850 at the instance of Wm Spear by virtue of his Actual Settlement & improvement, and agreeable to old Lines and corners as satisfactorily to all adjoiners containing two hundred and eighty one Acres in half & allowance.

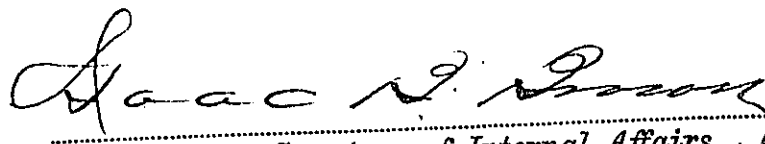
Hugh McKee County Survr.

Hon. J. Porter Brawley survior Genral

I Hugh McKee County Surveyor of County of Butler Certify After a carefull Examination of books and papers in my Possession, the above described Tract of Land has never yet been Pattented otherwise apropriated by you, as my hand and Seal will witness this 30th. day of August 1851.

Hugh McKee County SUR. 

IN TESTIMONY that the above is a copy of the original remaining on file in the Department of Internal Affairs of Pennsylvania, made conformably to an Act of Assembly approved the 16th day of February 1833, I have hereunto set my hand and caused the Seal of said Department to be affixed at Harrisburg, this twelfth day of January 1907


Secretary of Internal Affairs.